

SMA6L SERIES

VBR : 6.8 - 58 Volts

PPK : 600 Watts

Features

- Same power as standard SMB devices (600 W)
- SMA low profile package: less than 1.0 mm
- Footprint compatibility with standard SMA
- Typical IR less then 1 μ A above 10V
- RoHS compliant package

Application

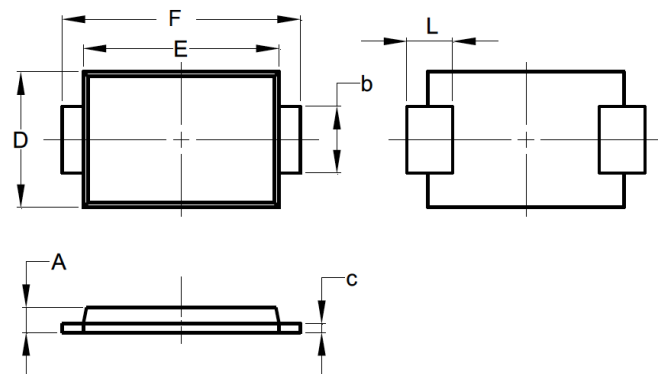
- Electrical characteristics apply in Uni- direction

Mechanical Data

- Case : Thin SMA Flat (SMAF) Molded plastic
- Epoxy : UL94V-0 rate flame retardant
- Lead : Lead Formed for Surface Mount
- Polarity : Color band denotes cathode end
- Mounting position : Any
- Weight : 0.055 gram
- Case : SMAL package

Packing & Order Information

3,000/Reel

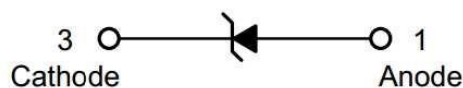


SMAF		
Dim	Min	Max
A	0.90	1.10
b	1.30	1.70
c	0.10	0.30
D	2.30	2.90
E	3.60	4.30
F	4.80	5.30
L	0.80	1.30
All Dimensions in mm		



RoHS
COMPLIANT

Graphic symbol



MAXIMUM RATINGS AND ELECTRICAL CHARACTERISTICS

Rating at 25°C ambient temperature unless otherwise specified.

Symbol	Parameter	Value	Unit
PPK	Peak Power Dissipation at Ta = 25°C , Tp=1 ms (Note 1)	600 Minimum	W
PD	Steady State Power Dissipation at TL = 75°C	1.0	W
IFSM	Peak Forward Surge Current, 8.3ms Single Half Sine -Wave Superimposed on Rated Load (JEDEC Method) (Note 3)	50	A
TJ, TSTG	Operating and Storage Temperature Range	-55 to +150	°C

Notes :

- (1) Non-repetitive Current pulse, per Fig. 5 and derated above Ta = 25 °C per Fig. 1
- (2) Mounted on copper Lead area at 5.0 mm² (0.013 mm thick).
- (3) 8.3 ms single half sine-wave, duty cycle = 4 pulses per Minutes maximum.

SMA6L SERIES

VBR : 6.8 - 58 Volts

PPK : 600 Watts

ELECTRICAL CHARACTERISTICS (Rating at 25°C ambient temperature unless otherwise specified)

Type No.	Reverse Stand off Voltage VR (Volts)	Breakdown Voltage VBR (Volts) @ IT		Test Current IT(mA)	Maximum Clamping Voltage VC @ Ipp	Maximum Peak Pulse Current Ipp(A)	Maximum Reverse Leakage IR @ VR(μA)
		MIN	MAX				
SMA6L6.5A	6.5	7.22	7.98	10	11.2	53.6	500
SMA6L7.0A	7.0	7.78	8.60	10	12.0	50.0	200
SMA6L7.5A	7.5	8.33	9.21	1	12.9	46.6	100
SMA6L8.0A	8.0	8.89	9.83	1	13.6	44.2	50
SMA6L8.5A	8.5	9.44	10.40	1	14.4	41.7	20
SMA6L9.0A	9.0	10.00	11.10	1	15.4	39.0	10
SMA6L10A	10.0	11.10	12.30	1	17.0	35.3	5
SMA6L11A	11.0	12.20	13.50	1	18.2	33.0	1
SMA6L12A	12.0	13.30	14.70	1	19.9	30.2	1
SMA6L13A	13.0	14.40	15.90	1	21.5	28.0	1
SMA6L14A	14.0	15.60	17.20	1	23.2	25.9	1
SMA6L15A	15.0	16.70	18.50	1	24.4	24.6	1
SMA6L16A	16.0	17.80	19.70	1	26.0	23.1	1
SMA6L17A	17.0	18.90	20.90	1	27.6	21.8	1
SMA6L18A	18.0	20.00	22.10	1	29.2	20.6	1
SMA6L20A	20.0	22.20	24.50	1	32.4	18.6	1
SMA6L22A	22.0	24.40	26.90	1	35.5	16.9	1
SMA6L24A	24.0	26.70	29.50	1	38.9	15.5	1
SMA6L26A	26.0	28.90	31.90	1	42.1	14.3	1
SMA6L28A	28.0	31.10	34.40	1	45.4	13.3	1
SMA6L30A	30.0	33.30	36.80	1	48.4	12.4	1
SMA6F33A	33.0	36.70	40.60	1	53.3	11.3	1
SMA6F36A	36.0	40.00	44.20	1	58.1	10.4	1
SMA6F40A	40.0	44.40	49.10	1	64.5	9.3	1
SMA6F43A	43.0	47.80	52.80	1	69.4	8.7	1
SMA6F45A	45.0	50.00	55.30	1	72.7	8.3	1
SMA6F48A	48.0	53.30	58.90	1	77.4	7.8	1
SMA6F51A	51.0	56.70	62.70	1	82.4	7.3	1
SMA6F54A	54.0	60.0	66.30	1	87.1	6.9	1
SMA6F58A	58.0	64.40	71.20	1	93.6	6.5	1

Note:

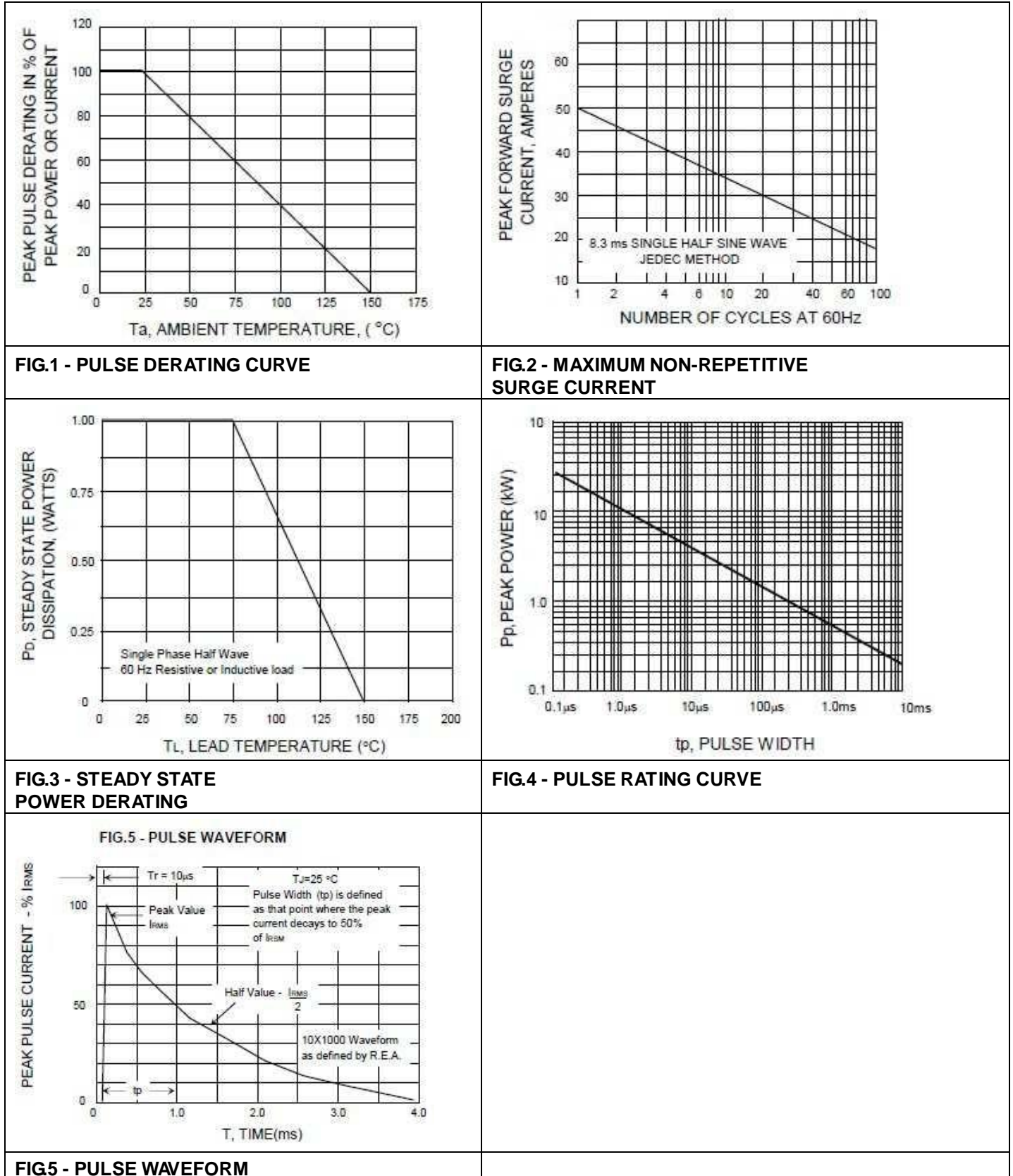
(1) "SMA6" will be omitted in marking on the diode.

SMA6L SERIES

VBR : 6.8 - 58 Volts

PPK : 600 Watts

■ RATING AND CHARACTERISTIC CURVES (SMA6L SERIES)



SMA6L SERIES

VBR : 6.8 - 58 Volts

PPK : 600 Watts

Disclaimer

ALL PRODUCT, PRODUCT SPECIFICATIONS AND DATA ARE SUBJECT TO CHANGE

WITHOUT NOTICE TO IMPROVE RELIABILITY, FUNCTION OR DESIGN OR OTHERWISE.

Bruckewell Technology Inc., its affiliates, agents, and employees, and all persons acting on its or their behalf (collectively, "Bruckewell"), disclaim any and all liability for any errors, inaccuracies or incompleteness contained in any datasheet or in any other disclosure relating to any product.

Bruckewell makes no warranty, representation or guarantee regarding the suitability of the products for any particular purpose or the continuing production of any product. To the maximum extent permitted by applicable law, Bruckewell disclaims

- (i) Any and all liability arising out of the application or use of any product.
- (ii) Any and all liability, including without limitation special, consequential or incidental damages.
- (iii) Any and all implied warranties, including warranties of fitness for particular purpose, non-infringement and merchantability.

Statements regarding the suitability of products for certain types of applications are based on Bruckewell's knowledge of typical requirements that are often placed on Bruckewell products in generic applications.

Such statements are not binding statements about the suitability of products for a particular application. It is the customer's responsibility to validate that a particular product with the properties described in the product specification is suitable for use in a particular application. Parameters provided in datasheets and/or specifications may vary in different applications and performance may vary over time.

Product specifications do not expand or otherwise modify Bruckewell's terms and conditions of purchase, including but not limited to the warranty expressed therein.