

## BAS21

### Switching Diode

#### Features

- RoHS compliant package

#### Mechanical Data

- Case: SOT-23 Molded plastic
- Epoxy: UL94V-O rate flame retardant

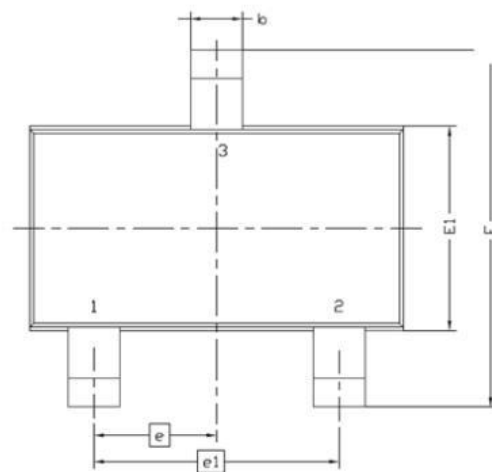
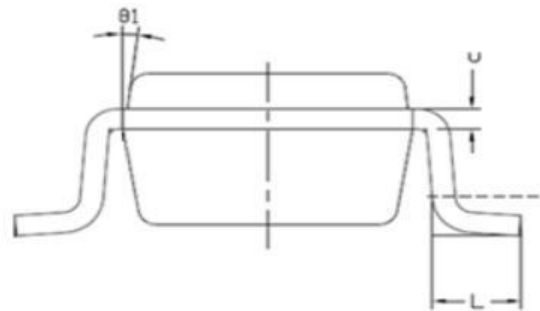
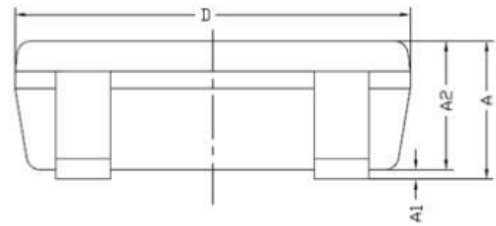
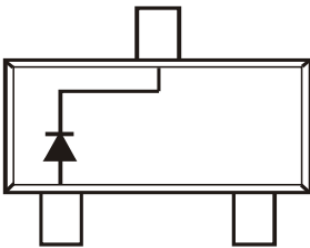
#### Packing & Order Information

3,000/Reel



**RoHS  
COMPLIANT**

#### Graphic symbol



Symbol	MILLIMETERS	
	MIN	MAX
A	0.8	1.2
A1	0	0.1
A2	0.7	1.1
b	0.3	0.5
c	0.1	0.2
D	2.7	3.1
E	2.6	3
E1	1.4	1.8
e	0.95 BSC	
e1	1.9 BSC	
L	0.3	0.6
theta 1	7° NOM	

## BAS21

### Switching Diode

#### MAXIMUM RATINGS AND ELECTRICAL CHARACTERISTICS

Maximum Ratings ( $T_A=25^{\circ}\text{C}$  unless otherwise specified)

Symbol	Parameter	MIN	MAX	Unit
PD( $T_A=25^{\circ}\text{C}$ )	Power dissipation		225	mW
IF	Forward Current		200	ma
VR	Reverse Voltage VR		250	V
TJ/TSTG	Junction and Storage Temperature		-55 to +150	$^{\circ}\text{C}$
V(BR)	Reverse Breakdown Voltage( $I_R=100\mu\text{A}$ )	250	--	V
IR	Reverse Leakage Current( $V_R=200\text{V}$ )		1	$\mu\text{A}$
VF	Forward Voltage(Test Condition)			
	IF=100mA		1.0	V
	IF=200mA		1.25	
CD	Diode Capacitance ( $V_R=0\text{V}$ , $f=1\text{MHz}$ )		8	pF
Trr	Reverse Recovery Time		50	nS

## BAS21

### Switching Diode

#### Characteristics Curve

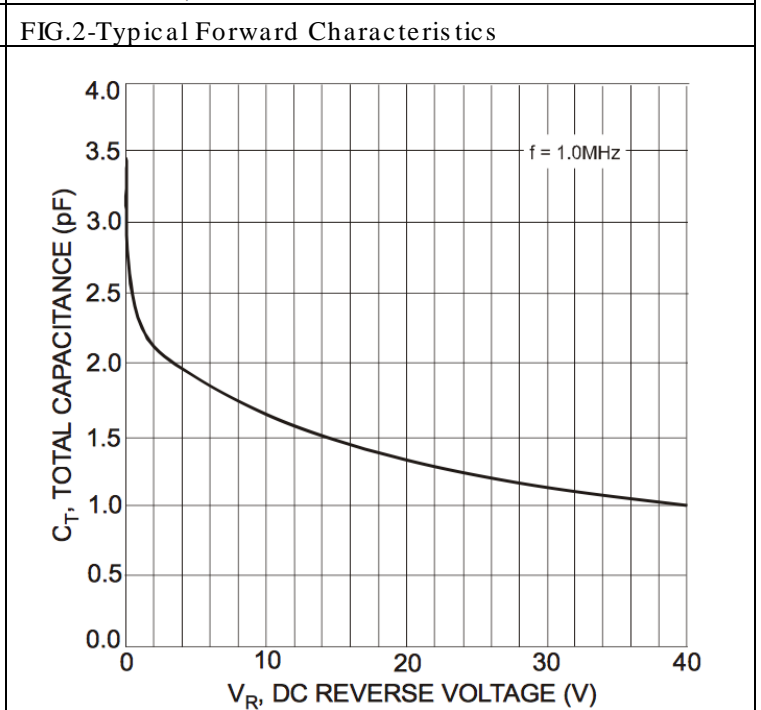
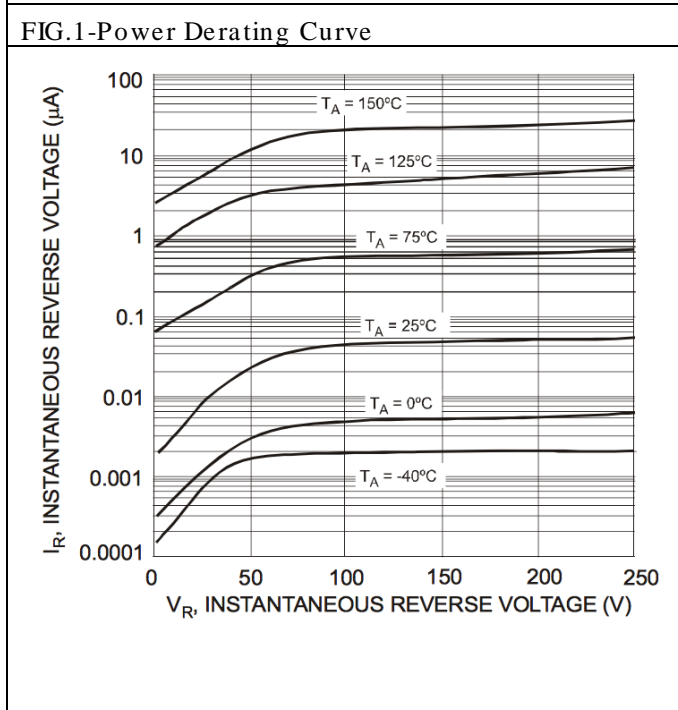
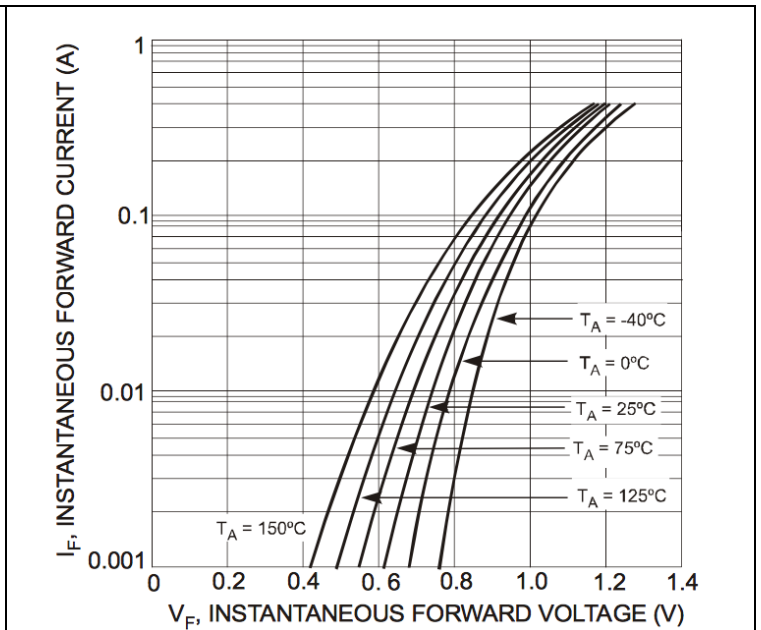
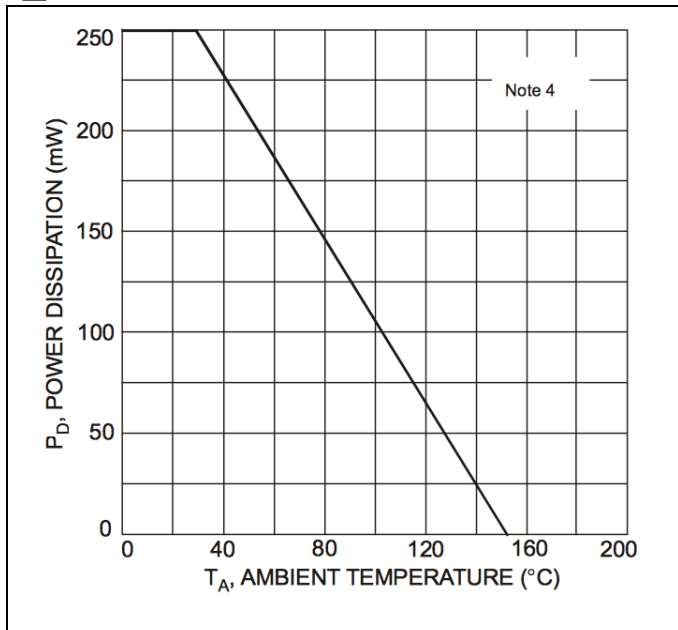


FIG.3-Typical Reverse Characteristics

FIG.4-Total Capacitance vs. Reverse Voltage

## BAS21

### Switching Diode

#### Disclaimer

ALL PRODUCT, PRODUCT SPECIFICATIONS AND DATA ARE SUBJECT TO CHANGE

WITHOUT NOTICE TO IMPROVE RELIABILITY, FUNCTION OR DESIGN OR OTHERWISE.

Bruckewell Technology Inc., its affiliates, agents, and employees, and all persons acting on its or their behalf (collectively, "Bruckewell"), disclaim any and all liability for any errors, inaccuracies or incompleteness contained in any datasheet or in any other disclosure relating to any product.

Bruckewell makes no warranty, representation or guarantee regarding the suitability of the products for any particular purpose or the continuing production of any product. To the maximum extent permitted by applicable law, Bruckewell disclaims

- (i) Any and all liability arising out of the application or use of any product.
- (ii) Any and all liability, including without limitation special, consequential or incidental damages.
- (iii) Any and all implied warranties, including warranties of fitness for particular purpose, non-infringement and merchantability.

Statements regarding the suitability of products for certain types of applications are based on Bruckewell's knowledge of typical requirements that are often placed on Bruckewell products in generic applications.

Such statements are not binding statements about the suitability of products for a particular application. It is the customer's responsibility to validate that a particular product with the properties described in the product specification is suitable for use in a particular application. Parameters provided in datasheets and/or specifications may vary in different applications and performance may vary over time.

Product specifications do not expand or otherwise modify Bruckewell's terms and conditions of purchase, including but not limited to the warranty expressed therein.